

# AAUW Pennsylvania Newsletter for Branch Program VPs

## GET WITH THE PROGRAM

September 2004      Volume I, Issue I

### Welcome to the Branch Program VP Newsletter

This is the first issue of a newsletter designed to help keep the Pennsylvania Branch Program Vice Presidents (PVPs) informed about the many aspects of AAUW. Topics to be covered in this and successive newsletters are meant to help you better perform your role as a Branch PVP. A lot of what will appear will be informational. Regular updates on what is going on at AAUW national and the state will be given. Updates on EF research and LAF cases will be featured in the EF/LAF Corner. Each issue will highlight one of the Public Policy Priorities established by the state or national AAUW. Any upcoming AAUW meetings or sym-

posia, both national and state, will be mentioned and registration information provided for those interested. Grants that are offered will be described and application procedures given. International women's issues that are being addressed by national and the states will be highlighted. The Adelante Book Club selection of the month will be included as well as any other similar AAUW items of interest.

Each newsletter issue will endeavor to help you with some aspect of programming. This may include sharing a good program one of the branches presented, ideas on specific program categories

such as diversity, attracting younger members, membership recruitment, or ideas on how to make your programs more interactive and fun.

The purpose of this newsletter is to keep you up to date on AAUW happenings and to help you with your branch's programming. If you have any suggestions or contributions you would like to make to the newsletter, please don't hesitate to contact me. The plan is to provide this newsletter via e-mail or USPS for those not computer-connected, on a monthly basis from September to June. I hope you find it useful.

Dot McLane, AAUW-PA Program Vice President

### Regular Features:

- ?? Association News
- ?? AAUW-PA News
- ?? Program Ideas
- ?? Public Policy Priorities
- ?? EF/LAF Corner
- ?? Adelante Book Club
- ?? Association Community Programs

### Inside this

Leader on Loan	2
State Website Plans	2
PA Governor's Conference for Women	2
AAUW Association News	3
EF/LAF Corner	3
AAUW-PA News	3
Public Policy Priority	4
Adelante Book Club	4

### Important Dates to Remember

September 14, 2004	PA Governor's Conference for Women, Philadelphia, PA
November 12-14, 2004	2004 International Symposium to Focus on Public Health and Technology, Washington, DC
October 8, 2004	Deadline for State Program Grant Applications
April 8-10, 2005	76th PA State Convention, Hershey-Harrisburg
June 24-27, 2005	National Convention, Washington D.C.

### Program Ideas—State Leader on Loan (LOL) Program

Many of you may not be familiar with the state LOL program. LOL is a resource of speakers from the state of Pennsylvania which you can invite to present a branch program, a workshop, conduct a board orientation, or participate in a community based event. Your branch may request one AAUW-PA LOL visit per year. In addition, each branch may request one visit from the President during her two-year term.

There are no speaker fees, an important consideration for most branches. AAUW-PA pays for all approved travel expenses while your branch provides hospitality (meals and overnight accommodations, if necessary).

A brochure of the 2004-2005 LOL speaker names and topics is expected to be available to you by October 2004. I realize that many of your branches already have their 2004-2005 programs

planned, however, if you need to flesh out your schedule or are looking towards 2005-2006 this information will help you.

Once you have decided on a speaker you are responsible for making the initial contact with the LOL you wish to have speak. After you have agreed to a date, time, and format, send in a "Leader on Loan Request Form" which is available from Dot McLane.



*"There are no speaker fees for Leaders on Loan"*

### Plans for the PA State Website

Pennsylvania has an outstanding website which is administered by Louise McLeod. If you have not already visited the site, please do at [aauwpa.org](http://aauwpa.org). Information available includes Membership news, Public Policy, EF/LAF, Keystone issues, PA Strategic Plan 2002-2004, a calendar of important dates, forms for grant and award applications, links to PA branch

websites and links to various national website topics.

During my tenure as State PVP, I plan to put as much information as possible on the website for the purposes of having branches share this information. Included in these plans will be ideas for branch monthly programs, fundraising ideas, and information about various com-

munity programs in which your branch may be interested in participating.

I highly recommend to all of you to utilize this website, it truly is great. I also encourage you to regularly visit the national website at [aauw.org](http://aauw.org), which is also outstanding.

**"AAUW-PA Website  
[aauwpa.org](http://aauwpa.org)"**

### Pennsylvania Governor's Conference for Women, Philadelphia PA, Tuesday September 14, 2004

The first PA Governor's Conference for Women is taking place in Philadelphia at the Convention Center. AAUW-PA is a supporting organization and will have a booth at the exhibitions. The program tracks include: Leadership, The Pursuit of Happiness, Living with Purpose, Rules of Engagement,

Strategies for Success, Career Portals, and a Young Women's Track. Speakers include Laura Liswood, Secretary General, Council of Women World Leaders, Ann Richards, former Governor of Texas, Donna Lopiano, Executive Director, Women's Sports Foundation, Jean Chatzky, Financial

Education, and many others. It is short notice but try to attend if you can.

The early bird registration (by September 1) is \$90 and after that is \$100. For information about the convention and registration visit [www.pagovernorsconferen-ceforwomen.org](http://www.pagovernorsconferen-ceforwomen.org).



Visit  
The State  
Website

## Association News

Executive Director Jackie Woods resigned effective 6/30/04 and Association is currently being directed by a Leadership Team. A replacement is being sought.

Due to a deficit budget a few changes have occurred at Association. The Leader on Loan (LOL) program has been put on hiatus for one year. LOLs are still available but the branch will need to cover the travel and any other costs. This does not affect the AAUW-PA LOL program (see article p. 2).

The Board voted to NOT pay the International Federation of University Women (IFUW) dues in the

upcoming year. Since AAUW dues account for about 40% of IFUW's budget, IFUW is asking for a 50% dues increase from its remaining members and pursuing other options.

The 21st Century Recognition Program will be turned over to States to recognize the branches and the Regional Coordinators to recognize the States.

"One in a Million" campaign pins featuring the slogan "Because Equity is still an Issue" are on sale for \$120 which goes to Association. Although any one may purchase these, a special request is being made to

the over 11,000 Life Members to purchase these since they no longer pay association dues. Contact Karen Rowe, 717-767-6654 or karenrowe@suscom.net if interested.

Volunteers are being sought for National Convention in Washington June 24-27, 2005. If interested contact your branch president or Dot McLane.

Some branches have not returned Affiliate Agreements to Association. If these are not received by January 1, 2005, a branch's connection with AAUW is in danger.

**Because  
"Equity is  
still an Issue"  
Pins Available**

## Educational Foundation (EF)/Legal Advocacy Fund (LAF) Corner

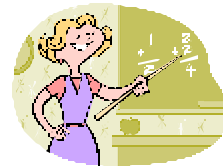
### EF

Financial considerations have prompted some changes at EF. These include putting the Eleanor Roosevelt Fund (ERF) teaching fellowships on hiatus for 2 years due to financial reasons as well as fewer than expected applicants. However, branches can still designate EF contributions to

ERF. Community Action grants are on hiatus for 2 years. The EF board is being downsized to 12 members. EF is considering selling or remodeling the building it owns and in which LAF and Association also reside. EF Board President Mary Ellen Smith stated that regardless of the decision, EF and the other corporations will always have a home.

### LAF

The LAF is also facing financial difficulties. LAF has approached the EF with a proposal to pursue a merger to become a Limited Liability Corporation (LLC). LAF would continue their work with plaintiffs in this new partnership. Restructuring is expected to be completed by January 2005.



## AAUW-PA Board News

The STATE met and surpassed the Diamond Donor goal with a total of \$76,277 (101%). Additional Diamond Donor pins are available from Karen Rowe 717-767-6654 or karenrowe@suscom.net for a bargain price of \$5 which you can sell for a profit to your branch members if you wish.

21st Century Recognition Awards include a GOLD for Lansdale and Carlisle, and a SILVER for Makefield Area and the STATE.

AAUW-PA was recognized as 2nd in the nation for LAF total contributions (\$30,390) and 9th in the nation per capita (\$9.54). Pottstown was recognized as 5th in the nation per capita contribu-

tions to LAF (\$55). AAUW-PA was 10th in the nation for EF total contributions (\$67,712).

Branches are being asked to complete and return their Membership Dialogue form no later than November 15, 2004. Any questions contact AAUW-PA MVP Maryrose Petrizzo, 302-761-9872 or maryrose60@yahoo.com.





**AAUW Pennsylvania Newsletter  
for Branch Program VPs**

103 Green Spring Circle  
Lansdale, PA 19446

215-362-3805  
dotmclane@comast.net

**The American Association of University Women promotes equity for all women and girls, lifelong education, and positive societal change. In principle and in practice, AAUW values and seeks a diverse membership. There shall be no barriers to participation in this organization on the basis of gender, race, creed, age, sexual orientation, national origin, disability, or class.**

**State Website [aauwpa.org](http://aauwpa.org)**

**Association Website [aauw.org](http://aauw.org)**

---

---

## **Get With the Program**

### **Adelante Book of the Month Club**

Personal growth and branch change go hand in hand. That's the idea behind the Adelante Book of the Month Club, a component of AAUW's diversity outreach program. Many members share a love for reading. By reading books written from the perspectives of diverse cultures, we can broaden our perspectives. You can read these selections as part of a book group or on your own. To subscribe to AAUW's online chat, e-mail [listserv@elists.aauw.org](mailto:listserv@elists.aauw.org), typing in the message section: SUBSCRIBE ADELANTE Your\_Firstname

Your\_Lastname. If you go to [aauw.org](http://aauw.org) Adelante books of the month section and use the "Buy the book now" link, your purchase from [amazon.com](http://amazon.com) supports AAUW.

The Adelante Book Club selection for September (Hispanic Heritage Month, September 15—October 15) is ***The Barefoot Heart: Stories of a Migrant Child* by Elva Trevino Hart (1999)**. This honest and moving memoir follows a migrant child and her family as they travel to the farm fields of Minnesota and Wisconsin in search of work.

### **Public Policy Priority**

The public policy program underscores the AAUW's mission of promoting equity and education for all women and girls. AAUW-PA actively endorses the Association Public Policy Program and PA priorities are intended to complement Association priorities. Branches are encouraged to offer programs that reinforce these priorities. The featured priority is:

*"Promoting equitable treatment in the judicial system in regard to gender, race, creed, sexual orientation, age, national origin, disability, and economic status."*



***The Barefoot Heart:  
Stories of a Migrant  
Child***

**By Elva Trevino Hart**